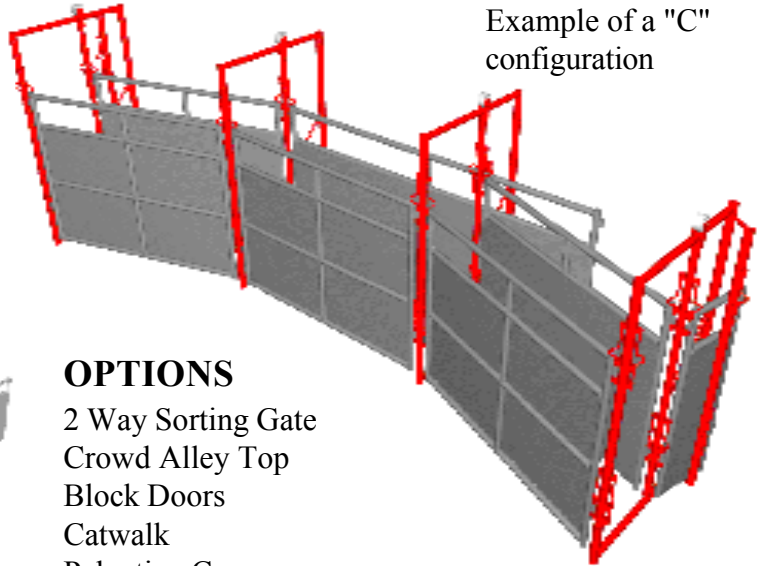


TWO-W "WRANGLER SYSTEM"

CROWDING ALLEY

The unique folding frames and slide panel make this system the ultimate in cattle handling systems. The crowd alley AND OPTIONAL PALPATION CAGE adjust very easily and set up in any configuration of "C" "S" or "Straight". Add as many sections of alley as you like. Comes with an alley end gate and moveable alley stop.

Example of a "C" configuration



OPTIONS

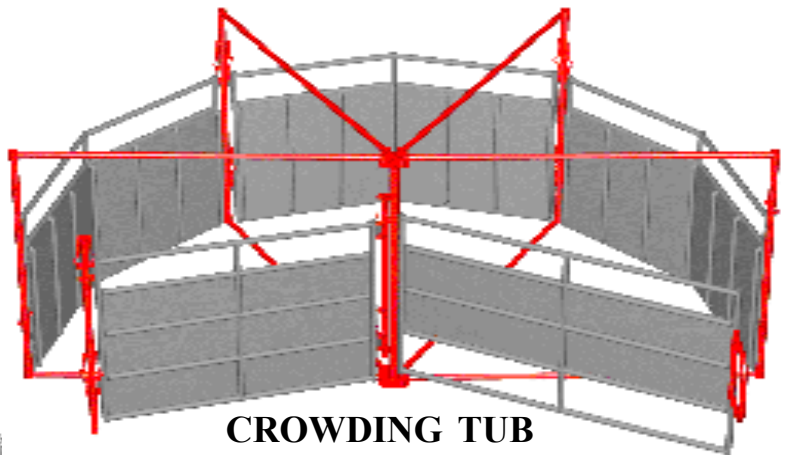
- 2 Way Sorting Gate
- Crowd Alley Top
- Block Doors
- Catwalk
- Palpation Cage

Alley Endgate



CROWDING TUB

Crowding tub will set up for either left or right rotation. A large 20 foot diameter with a solid positive latching system for added safety. Spreader bars top and bottom for added stability. An optional fourth section is available.



TWO-W LIVESTOCK EQUIPMENT LTD.

Box 430 Nanton, Alberta, T0L1R0

Ph. (403) 646-2133 Fax 646-2136

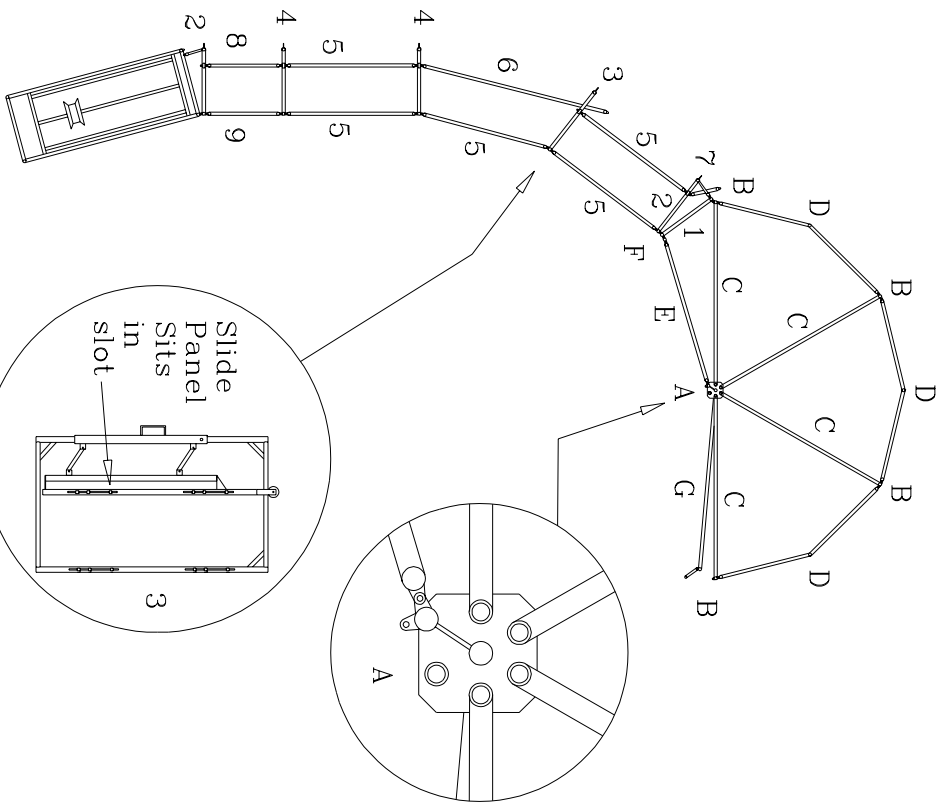
Email sales@two-w.com

WWW www.two-w.com

TWO-W

LIVESTOCKEQUIPMENT LTD.





CROWDING TUB

Assemble in Alphabetical Order

- A Center Post (1)
- B Perimeter Post (4)
- F 2 Way Post (1)
- D Perimeter Panels (3)
- E 8 Ft. Panel (1)

- C Top Spreaders (4)
- Bottom Spreaders (4) (bottom have notches)

- G Swing Gate And Latch (1)

CROWDING ALLEY

Assemble in Numerical Order

- 1 End Gate (1)
- 2 End Frame (2)
- 3 Slide Frame (1)
- 4 Center Frame (2)

- ## PAL CAGE
- 8 Panel (1)
 - 9 Gate (1)

- 5 Alley Panel (5)
- 6 Slide Panel (1)
- 7 Filler Panel (1)

DWG# 4358



TWO-W LIVESTOCKEQUIPMENT LTD.